

Hamlin Lake Sailing Association

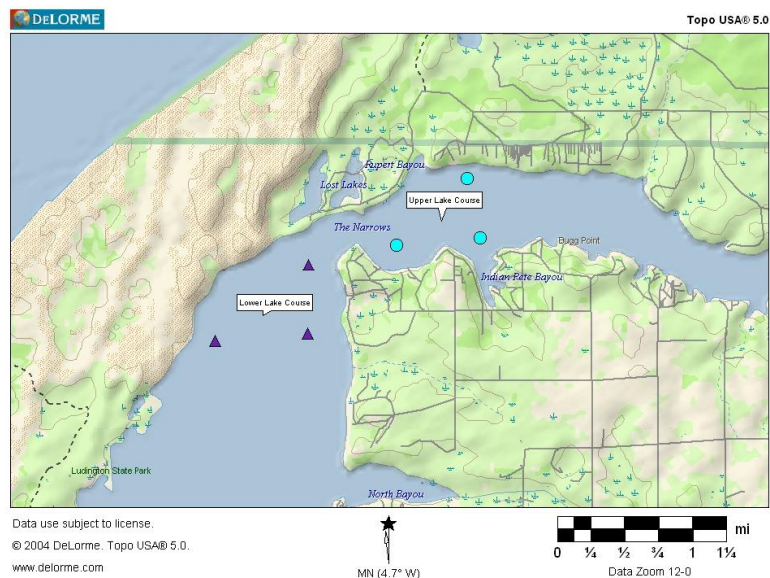


Notice of Race

Starting in July and running through Labor Day, we will run two sailboat races every Saturday starting at 2:00 P.M. These races will be held unless weather conditions prove to be hazardous to any and all competitors and vessels. The primary location will be a triangular course between the North Bayou, the State Park Entrance and the Dunes. An alternate location of just East of the Narrows between Rupert Bayou, Sunset Bay, and Indian Pete Bayou may also be used on occasion, weather dependent.

The race course will have a long leg of about 0.5 miles. This should normally provide a race of about 30 to 45 minutes in length. If there is any question about the weather, the race is likely to be cancelled for that day. The Lower Lake location is reasonably free of weeds, shallow enough to anchor the buoys, and is visible from everywhere on the lake which provides us with the most safety and exposure.

We will be following the 2005-2008 Racing Rules of Sailing as published by the ISAF and US Sailing Association, with modifications as noted.

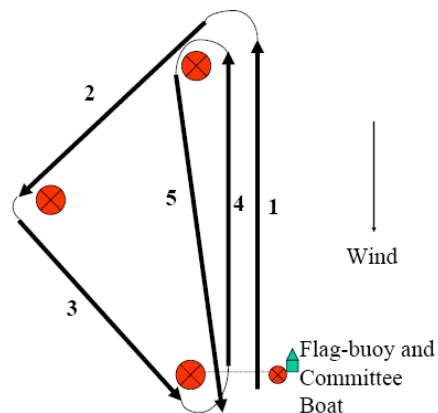


The Course

We will be using what is commonly referred to as an "O-5" race course. The Olympic triangle is a 45-90-45 degree triangle with the long leg to windward and the reaching mark (90 degree angle) on the port side of the course.

An Olympic triangle (O-5) race course can be described as:

1. Leg 1, the starting leg, into the wind.
2. Leg 2 will be to the second buoy on the left -- that is take the buoy to port.
3. Leg 3 would be from the second buoy that has been rounded to around the buoy at the starting line.
4. Leg 4 is a repeat of leg 1, from the starting buoy to the buoy that is upwind.
5. Leg 5 is the reverse of leg 4, rounding the buoy to port and returning to finish at the starting buoy.



The course shall be marked by orange inflatable markers at the three corners. The start/finish line will extend from the leeward mark to the committee boat at its anchor point.

Start Procedures

1. The race committee boat will sound a horn or whistle repeatedly to call "Assembly" 5 to 10 minutes before starting a race. When all captains understand the course, the committee boat will call "Stand by for 5 Minutes."
2. The committee boat will then sound a horn blasts and raise a flag to start the 5-minute countdown.
3. At four minutes to start, there will be one horn blast and a second flag raised.
4. At one minute to start, the committee boat will sound a horn blast and lower the second flag.
5. At the end of 60 seconds (making exactly a full 5 minutes), the committee boat will mark the start by sounding one horn blast and lowering the first flag.

Any boat passing over the starting line too soon will be verbally called back. If several boats are over, the committee boat will sound repeated blasts, indicating a recall. The race will be restarted. If a boat touches either the starting buoy or any buoy during the race except the final buoy, that boat must re-round the buoy. Think of the boat as trailing a string behind it. The boat must return to its proper course and not leave the string wound around the fouled buoy. Stated another way, the string must just turn the corner as if the boat had not struck the buoy. (At the finish, a boat can nose across the line and then graze the buoy without penalty.)

The Rules

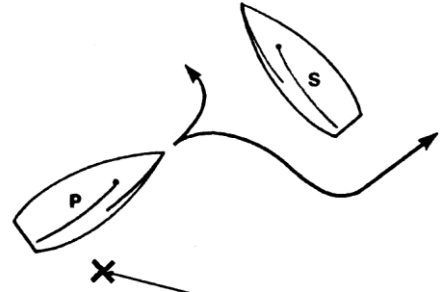
The following basic rules will apply during the start and the first sail to windward. The following are summarized from the RRS 2005-2008.

Altering Course

RRS16, Right-of-way yachts have an obligation to hold a course and not to alter course so as to collide with a yacht maneuvering to keep clear. If a right of way boat does change course she has to give the other boat room to keep clear.

Port – Starboard

RRS 10, The most universal of sailing rules, a port-tack yacht shall keep clear of a starboard-tack yacht. Sailors must therefore always know which tack that they are on.



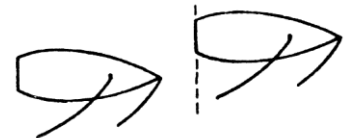
Same Tack – Luffing

RRS 11, When boats are on the same tack, the windward boat shall keep clear of a leeward boat.



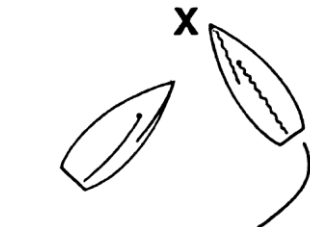
Clear Astern

RRS 12, It is not permissible to run into the stern of a boat.



Changing Tacks

RRS 13, A boat that tacks or gybes must keep clear of other boats.



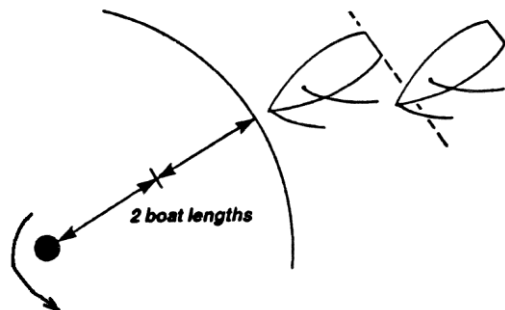
Keeping Clear

RRS 22, Boats that are not racing shall not interfere with boats that are racing. Boats are racing from the time of their Preparatory Signal (see the definition of *racing*). This implies that only those boats starting should be near the starting line and that all others should keep clear.

When approaching buoys and obstructions such as the edge of the lake, some modification to the right-of-way rules are required.

Rounding a Mark

Rule 18, the main aspects of this rule are given in the first couple of lines of 18.2(a) which says that an outside yacht shall give an inside yacht sufficient room to round the mark if an overlap is established when the outside yacht comes within two boat lengths of the mark.



This rule does not apply at the starting line, on the starting line the leeward boat has rights over a “barging” vessel trying to gain advantage. B A R G I N G I S I L L E G A L.

Penalties

1. If a boat fouls another boat, or makes contact with a marker, the boat in error can redeem itself by doing a 360-degree circle before the next buoy is rounded. Protests may be noted to the race committee after completion of the race.
2. All contact fouls are an automatic disqualification of the boat committing the foul. Contact should be reported to the Committee Boat by both boats. It is the responsibility of the captains to avoid contact regardless of who has right of way.

Scoring

1. All competitors will race using a USPN racing handicap. This is a number that has been based on established data by the US Sailing Portsmouth Committee. The USPN base numbers are available from US Sailing. Ratings are modified based on local race conditions, and appropriate factors based upon established principles by the US Sailing Portsmouth committee.
2. The Fleet will be scored in a two (2) division standings based upon the classification of the boat. Each boat will be recorded in either the Mono-hull (single hull) division or the Multi-hull (more than one hull) division. This is based upon the principle that these distinct boats type do not truly compare to each other in all wind conditions. A general overall ranking compared to the entire fleet will be posted as needed; otherwise rankings will only be based upon divisional standings.
3. The scoring system used will be a low point system as described in Appendix A of the RRS2005-2008. Each boat will be awarded points based upon its order of finish based upon corrected time. The boat finishing first will receive "1" points, second will receive "2" points, etc. Boats not competing in any race will receive "1" more point than the total number of boats competing in that race. If there are five boats competing, anyone not in attendance will receive "6" points added to their score.
4. Penalties for a disqualification will result in the boat receiving "1" more point than the number of boats sailing in that race.